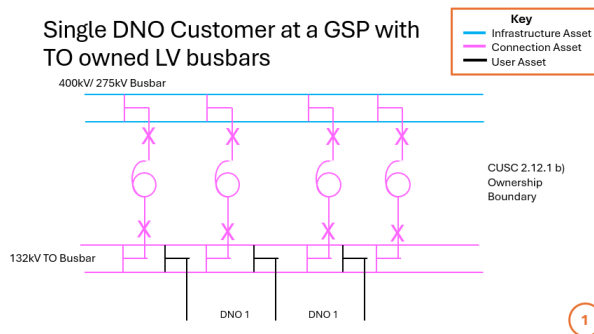


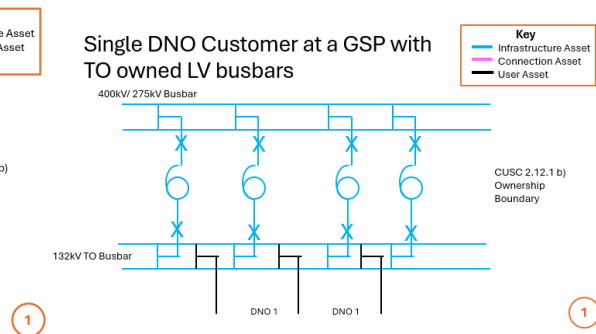
CMP460 Original Proposal – Comparison of Worked Examples to Identify Changes in Asset Classification

Example 1

Baseline



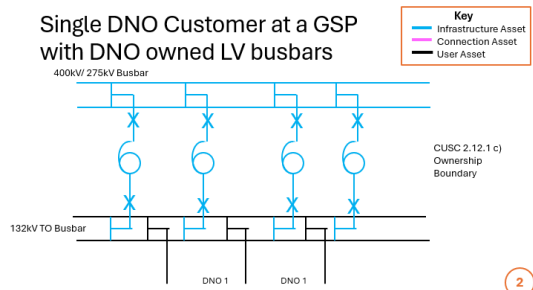
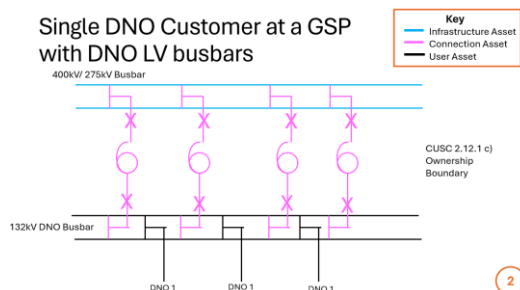
Original Proposal



Comment

The connection assets are reclassified as infrastructure assets as the Original Proposal assumes the transmission assets are being used, or can be used, by multiple Users in the future.

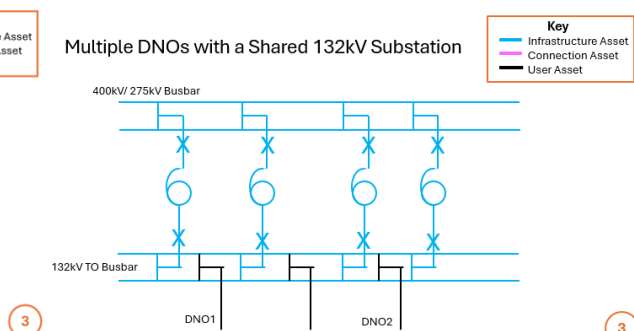
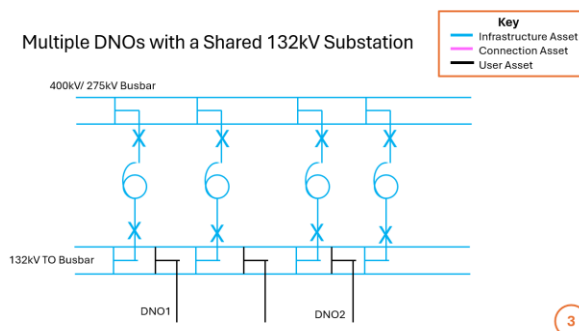
Example 2



Comment

Connection assets are reclassified as infrastructure assets, similar to Example 1. The DNO's ownership of the busbars does not alter the shared nature of the Transmission Assets.

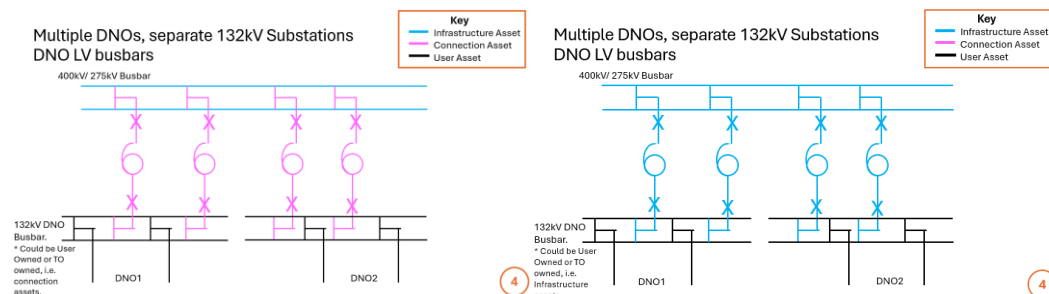
Example 3



Comment

The Proposal does not change the classification of transmission assets in Example 3.

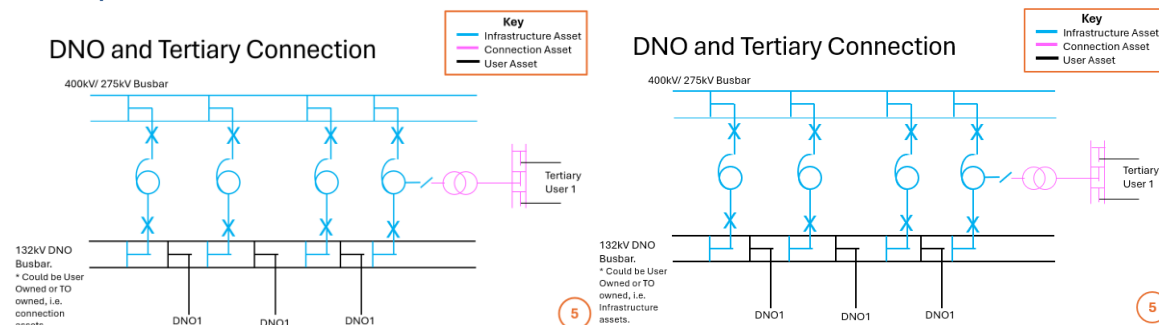
Example 4



Comment

The connection assets are reclassified as infrastructure assets as the Original Proposal assumes the transmission assets are being used, or can be used, by multiple Users now, or in the future.

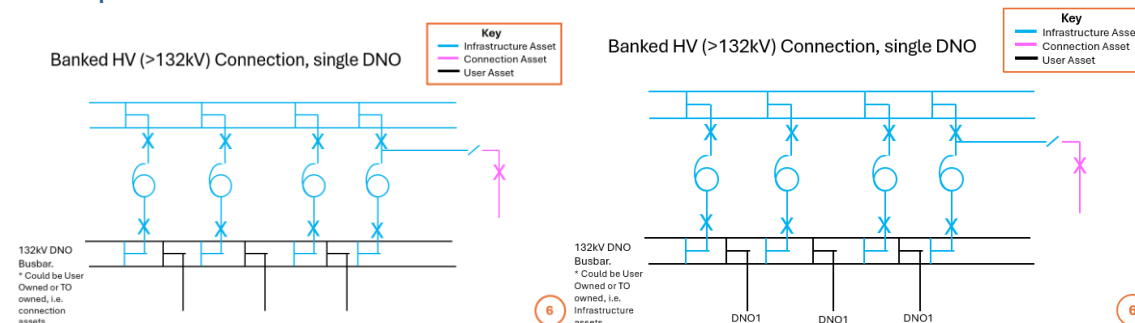
Example 5



Comment

The existence of a tertiary connection means that assets are already Infrastructure Assets. The Proposal does not change the classification of transmission assets in Example 5.

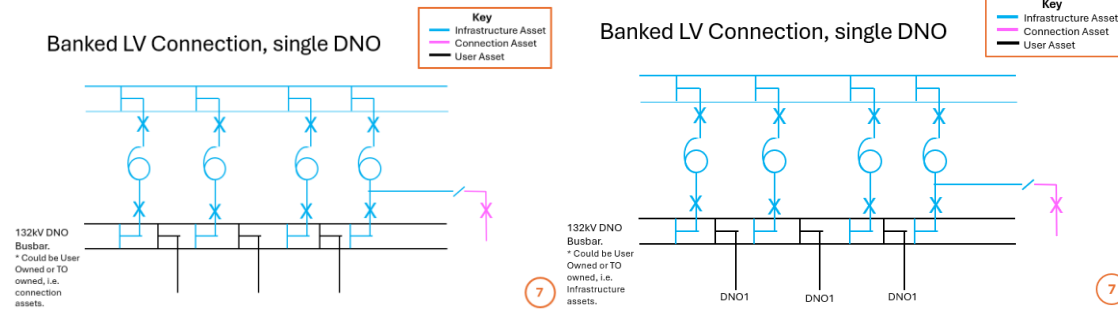
Example 6



Comment

The existence of a banked connection means assets are already Infrastructure Assets. The Proposal does not change the classification of transmission assets in Example 6.

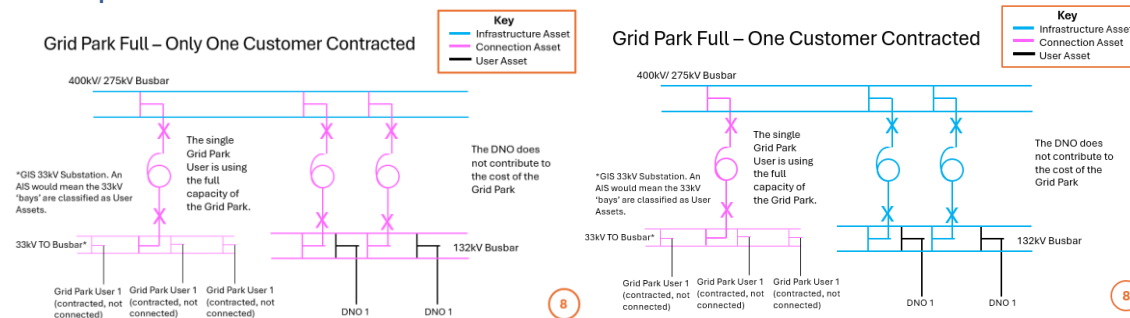
Example 7



Comment

The existence of a banked connection means assets are already Infrastructure Assets. The Proposal does not change the classification of transmission assets in Example 7.

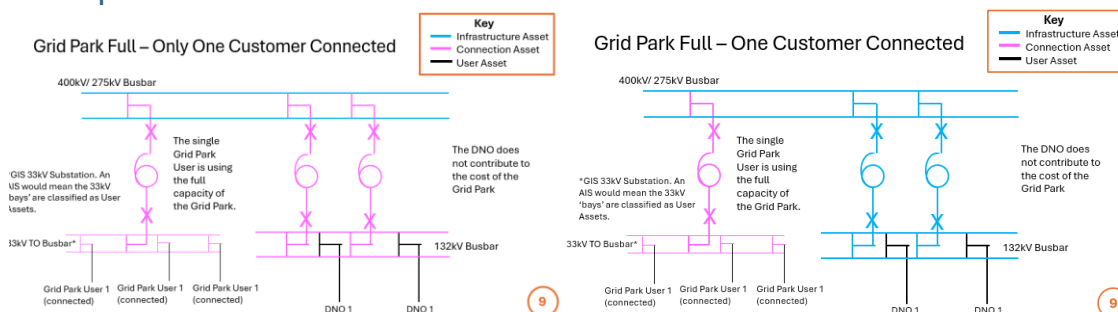
Example 8



Comment

The Grid Park Transmission Assets are wholly used now, and in the future, by the Grid Park User and remains connection assets. The connection assets triggered by the DNO User are reclassified as infrastructure assets as the Original Proposal assumes the Transmission Assets are being used, or can be used, by multiple Users now or in the future.

Example 9

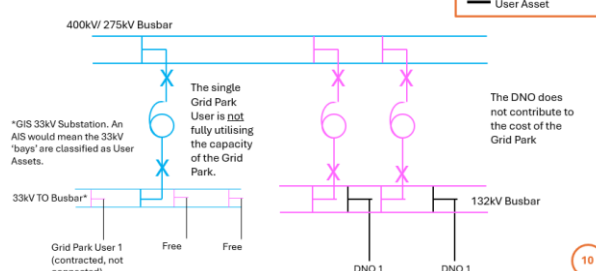


Comment

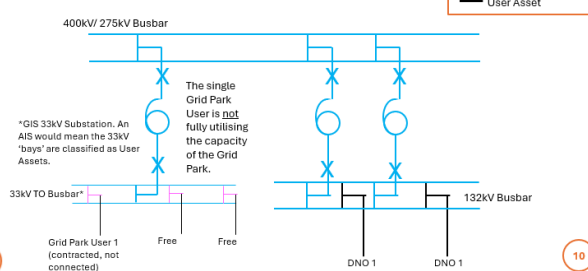
The classification of connection assets and infrastructure assets is the same whether the customers are connected (example 8) or contracted, not connected (example 9).

Example 10

Grid Park Partially Full – Only One Customer Contracted so Far



Grid Park Partially Full – One Customer Contracted

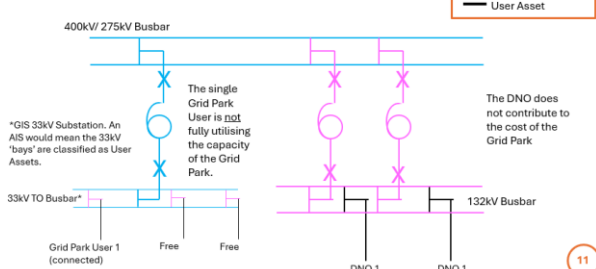


Comment

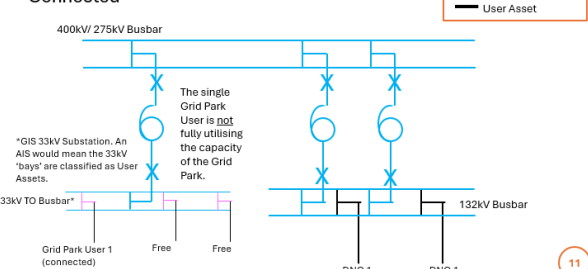
The Grid Park Transmission Assets can be shared by multiple Users in the future and are classified as Infrastructure Assets. The connection assets triggered by the DNO User are reclassified as Infrastructure Assets as the Original Proposal assumes the Transmission Assets are being used, or can be used, by multiple Users now, or in the future.

Example 11

Grid Park Partially Full – One Customer Connected



Grid Park Partially Full – One Customer Connected

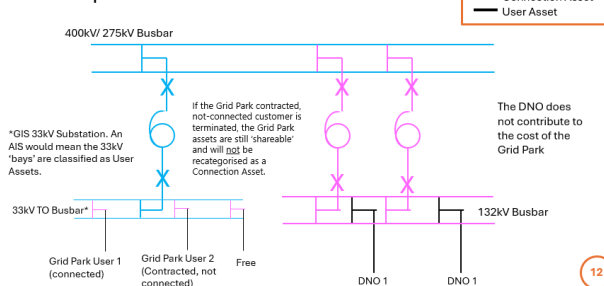


Comment

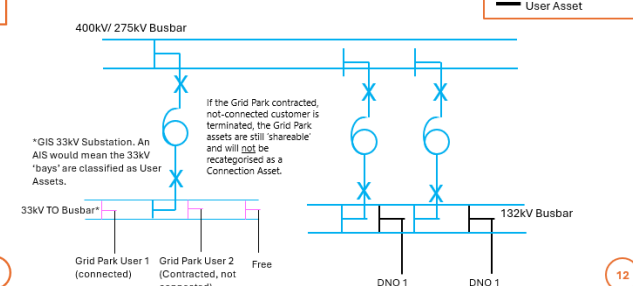
Connection Assets are reclassified as Infrastructure Assets whether the customer is contracted, not connected (example 10) or connected (example 11).

Example 12

Multiple Grid Park Users



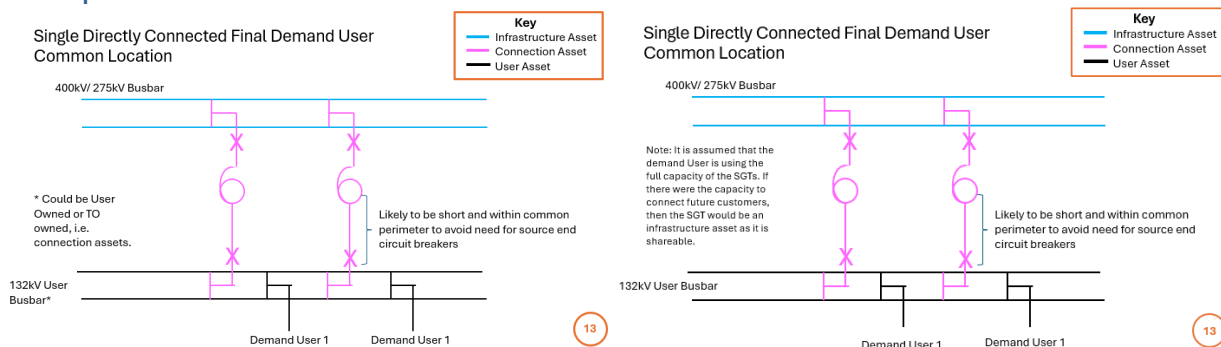
Multiple Grid Park Users



Comment

The Grid Park Transmission Assets are shared by multiple Users and remain Infrastructure Assets. The Connection Assets triggered by the DNO User are reclassified as Infrastructure Assets as the Original Proposal assumes the Transmission Assets are being used, or can be used, by multiple Users now, or in the future.

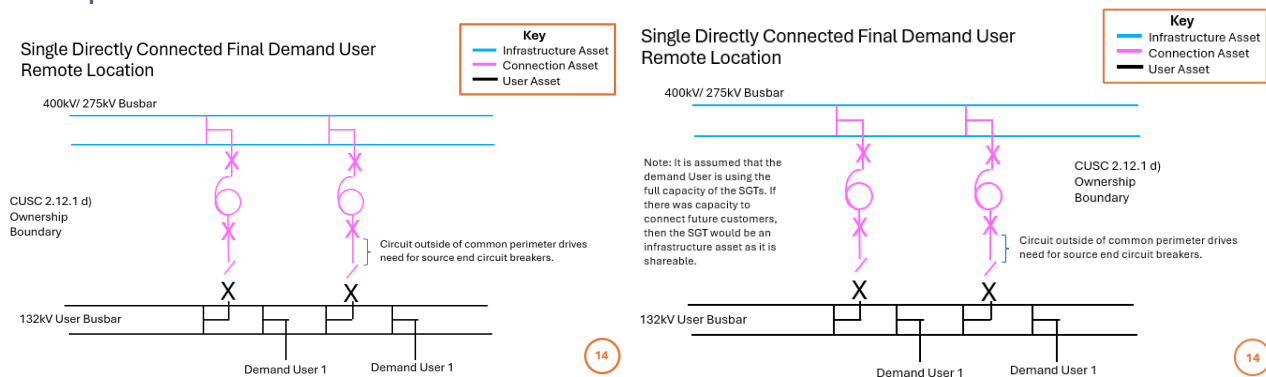
Example 13



Comment

The connection assets triggered by the Demand User are classified as Connection Assets as the Original Proposal assumes the Transmission Assets can only be used by the Demand User now, or in the future.

Example 14

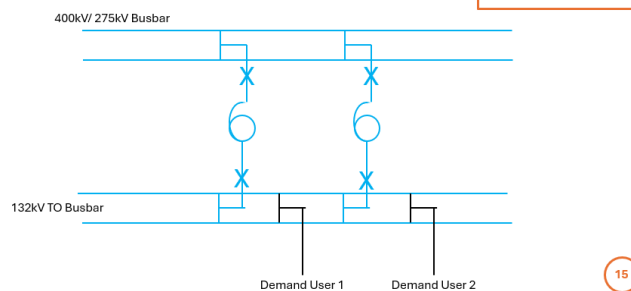


Comment

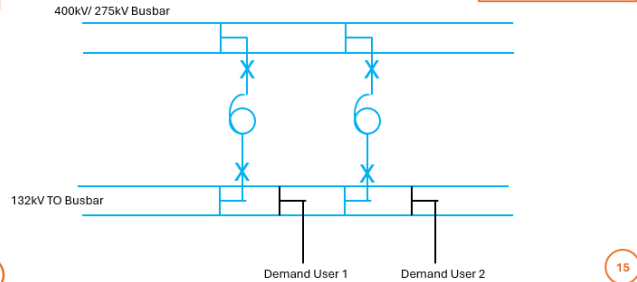
Similar to Example 13. The Demand User's ownership of the busbars does not alter the classification of the Transmission Assets.

Example 15

Multiple Directly (Transmission) Connected Final Demand Users Common Location



Multiple Directly Connected Final Demand Users Common Location

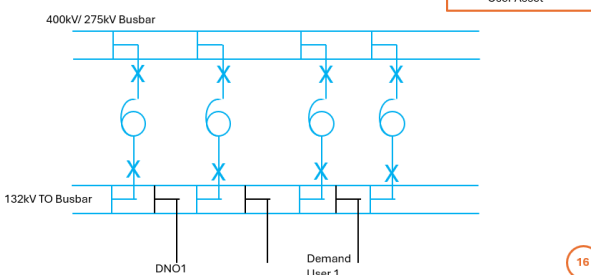


Comment

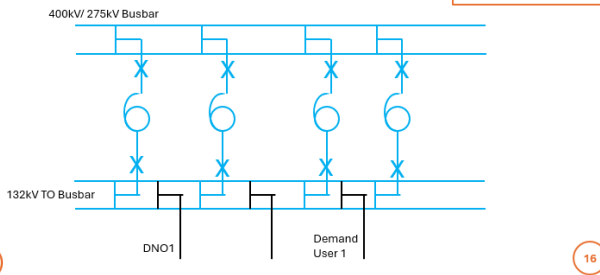
The Transmission Assets are classified as Infrastructure Assets as the Transmission Assets are being used by multiple Users now.

Example 16

DNO and Directly (Transmission) Connected Final Demand User with a Shared 132kV Substation



DNO and Directly (Transmission) Connected Final Demand User with a Shared 132kV Substation

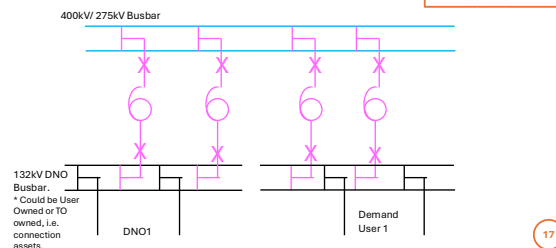


Comment

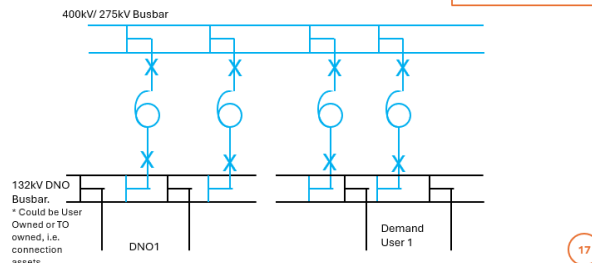
The Transmission Assets are classified as infrastructure assets as the transmission assets are being used by multiple Users now.

Example 17

DNO and Directly (Transmission) Connected Final Demand User with separate 132kV Substations



DNO and Directly (Transmission) Connected Final Demand User with separate 132kV Substations



Comment

The Connection Assets are reclassified as Infrastructure Assets as the Original Proposal assumes the Transmission Assets are being used, or can be used, by multiple Users now, or in the future.